

THE EARSHAM RAINBOW

NEWSLETTER ISSUE NO 1

6th September 2024



School Road, Earsham, Bungay, Suffolk NR35 2TF
Tel: 01986 892557
Fax: 01986 893634
Email: office@earsham.norfolk.sch.uk
www.earshamprimaryschool.co.uk
Headteacher: Mrs Heather Brand



*"Light brings every kind of goodness,
right living and truth" Ephesians 5:9*

Executive Headteacher's Message

Welcome back! It has been lovely to see everyone this week. Our value for this half term is respect and children have certainly shown that this week. It has been really impressive to see them confidently getting stuck in to new routines and learning. We are all certainly looking forward to the new year ahead and celebrating all the ways that we 'Shine from the inside out'.



School Prayer:

Sorry for not always telling the truth.

Sorry for the times we forget to be kind.

Thank you for all those who show compassion to us, and for the lovely things in the world that shine.

We will try to treat others how we would like to be treated, help us to respect and take care of others. Please Lord, help us shine and show compassion, to the sick and the needy, to our sisters and brothers. Amen.

Class updates;

Willow- This week in Art the children in Willow class explored different shapes and lines. On Thursday afternoon whilst the children were drawing the marks in their art books we discussed if they were going to draw a garden picture what do their lines look like for example, rain, grass, flowers, rainbows. On Friday afternoon the children drew the same lines and shapes to create a garden picture. The children in also started their Phonics and Maths lessons this week. Well done Willow Class for all of your hard work.

Maple Class have settled in to the school routines very well this week! We have already managed to begin our first maths unit on Place Value, our Geography topic on Climate Zones as well as our PE lessons on ball skills and our new French and PSHE units. It has been fantastic to get to know the Year 3 children better and see how much the Year 4 children have grown in six weeks! The new school year will bring many opportunities for all of our children to shine and we look forward to the months ahead!

Silver Birch Class have enjoyed their summer break and have settled quickly for the new academic year. We have started by exploring the Victoria Era in History as well as putting important dates into chronological order using a timeline. In science, we started our new topic on 'Properties and their materials'. We started by comparing different everyday objects and classifying them into categories of our choice. On Friday, we began our new PE unit on football as well as starting our computing unit on 'Video Editing'.

Good news stories



Well done to all our children who have settled back in to our school routine this week. We are especially proud of our reception children who have adapted so well to 'big school!'



Our School Day:

8:45 Gates Open

9:00 Registration closes

3:15 End of Day

Please ensure your child arrives/ is collected promptly each day.

If your child is absent from school due to illness, please ring the school office each day by 9am to advise.

Class PE Days:

Tuesdays—Maple and Silver Birch

Wednesdays—Willow

Thursdays—Maple

Fridays—Willow and Silver Birch

Children to come in to school in their PE kits on their PE days.

TERM DATES 2024/25

Norfolk County Council **2024-2025** Norfolk Model Calendar

This calendar applies to community schools, community special schools, VC schools and nursery schools and sets the days on which school transport will be provided. While most Foundation, VA, foundation special, free schools and academy trusts who are able to set their own dates, adopt the Norfolk Model, we advise you to check with your child's school before making holiday or other commitments.

September 2024	October 2024	November 2024	December 2024
M T W T F S S 1 2 3 4 5 6 7 8 9 10 11 12 13 14 15 16 17 18 19 20 21 22 23 24 25 26 27 28 29 30	M T W T F S S 1 2 3 4 5 6 7 8 9 10 11 12 13 14 15 16 17 18 19 20 21 22 23 24 25 26 27 28 29 30 31	M T W T F S S 1 2 3 4 5 6 7 8 9 10 11 12 13 14 15 16 17 18 19 20 21 22 23 24 25 26 27 28 29 30	M T W T F S S 1 2 3 4 5 6 7 8 9 10 11 12 13 14 15 16 17 18 19 20 21 22 23 24 25 26 27 28 29 30 31
January 2025	February 2025	March 2025	April 2025
M T W T F S S 1 2 3 4 5 6 7 8 9 10 11 12 13 14 15 16 17 18 19 20 21 22 23 24 25 26 27 28 29 30 31	M T W T F S S 1 2 3 4 5 6 7 8 9 10 11 12 13 14 15 16 17 18 19 20 21 22 23 24 25 26 27 28	M T W T F S S 1 2 3 4 5 6 7 8 9 10 11 12 13 14 15 16 17 18 19 20 21 22 23 24 25 26 27 28 29 30 31	M T W T F S S 1 2 3 4 5 6 7 8 9 10 11 12 13 14 15 16 17 18 19 20 21 22 23 24 25 26 27 28 29 30 31
May 2025	June 2025	July 2025	August 2025
M T W T F S S 1 2 3 4 5 6 7 8 9 10 11 12 13 14 15 16 17 18 19 20 21 22 23 24 25 26 27 28 29 30 31	M T W T F S S 1 2 3 4 5 6 7 8 9 10 11 12 13 14 15 16 17 18 19 20 21 22 23 24 25 26 27 28 29 30 31	M T W T F S S 1 2 3 4 5 6 7 8 9 10 11 12 13 14 15 16 17 18 19 20 21 22 23 24 25 26 27 28 29 30 31	M T W T F S S 1 2 3 4 5 6 7 8 9 10 11 12 13 14 15 16 17 18 19 20 21 22 23 24 25 26 27 28 29 30 31

FORTHCOMING EVENTS & ACTIVITES

18th September—Start of Year blessing 9am (Parents/carers welcome)

23rd September—Languages Day

11th October—Whole School Flu Vaccination

14th October—Individual/sibling school photos

School Attendance Dog

Congratulations to Willow Class who won this weeks award!!



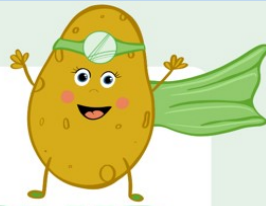
Our whole school attendance this year to date is 94.88%

A reminder that the school office is **closed** on Tuesday, Wednesday & Friday afternoons.

Please note, dates provided are accurate at time of printing but may be subject to change.

COMMUNITY NOTICEBOARD

JACKET
POTATO,
CHOICE OF
FILLING, SALAD
AND FRUIT



SPUD CLUB

ONLY £1

After school club

for primary age kids during term time

Thursdays 3.30 pm - 5.00 pm

Bungay Community Centre NR35 1PU

ACTIVITIES, FUN,
CRAFT, GAMES,
SUPERBOOK BIBLE VID
AND A FREE HEALTHY MEAL

With thanks to funding from East Suffolk Council and The Simon Gibson Charitable Trust

It's helpful to know numbers, please contact Ed on 07400033746 or email: edward.land@lightwave.community or just turn up!

Children to be accompanied by an adult



@LightwaveBungayandBeyond

www.lightwave.community



Club Open Evenings



On Wednesday 4th & 11th September we are holding Open Evenings. Why not pop down, see where we play, what a session looks like, and meet some of the players and club volunteers.

6.00-7.00pm for children age 5+

7.30-8.30pm aged 16 years +

at East Point Academy Astro.



Find us on
Facebook or
contact Alex,
07760 166977



LODDON WHITE DOLPHIN SWIMMING CLUB

www.loddonwhitedolphins.co.uk

HOBART HIGH SCHOOL
KITTENS LANE
LODDON
NR14 6JU

- Lessons Monday to Saturday
- Focussing on Learn to Swim Programme
 - Improve stroke technique
- Survival and lifesaving skills taught
 - Accredited with Swim England
 - Lessons from Age 5 and above

LESSON COST: £16.00 per month payable by DD

Contact whitedolphinsinfo@gmail.com with your child's name, date of birth and your contact information.